

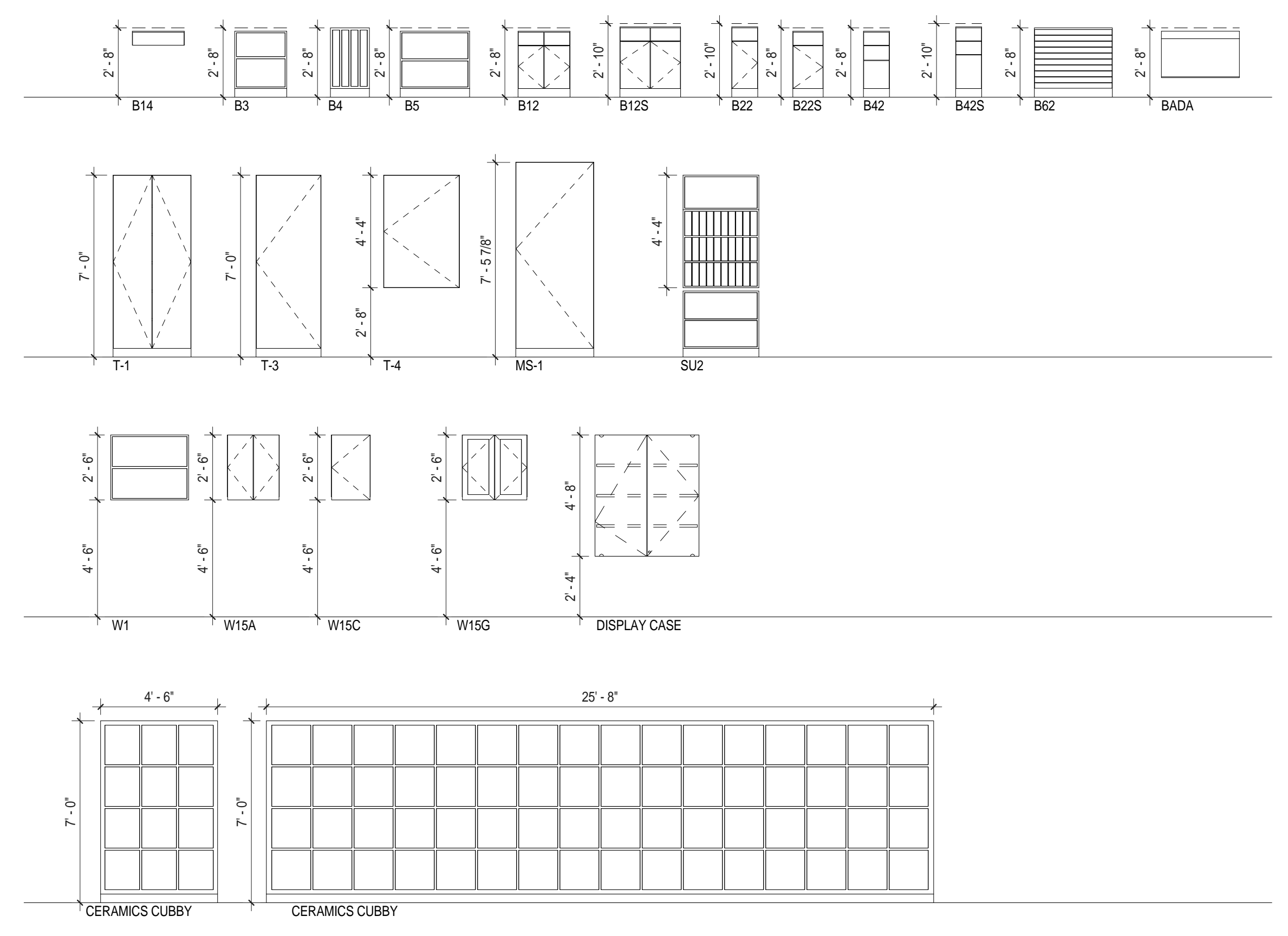
F

D

C

B

CCHS Casework Schedule					
Type	Casework Description	Dimension			Comments
		Width	Height	Depth	
BASE CABINETS					
B3-36	OPEN STORAGE	3' - 0"	2' - 8"	2' - 0"	
B3-36	OPEN STORAGE W/ ADJ SHELF	3' - 0"	2' - 8"	2' - 0"	
B4-36	OPEN STORAGE W/ 3 VERTICAL DIVIDERS	3' - 0"	2' - 8"	2' - 0"	
B5-32	OPEN STORAGE W/ ADJ SHELF	2' - 8"	2' - 6 1/2"	2' - 0"	
B12-30	STORAGE W/ DOUBLE DOORS & DRAWERS	2' - 6"	2' - 8"	2' - 0"	
B12-36	STORAGE w/ DOUBLE DOORS & DRAWERS	3' - 0"	2' - 8"	2' - 0"	
B12-45	STORAGE W/ DOUBLE DOORS & DRAWERS	3' - 9"	2' - 10"	2' - 0"	
B12-48	STORAGE W/ DOUBLE DOORS & DRAWERS	4' - 0"	2' - 8"	2' - 0"	
B12S-30	STORAGE W/ DOUBLE DOORS & DRAWERS	2' - 6"	2' - 10"	2' - 0"	
B12S-36	STORAGE w/ DOUBLE DOORS & DRAWERS	3' - 0"	2' - 10"	2' - 0"	
B12S-42	STORAGE W/ DOUBLE DOORS & DRAWERS	3' - 6"	2' - 10"	2' - 0"	
B12S-48	STORAGE W/ DOUBLE DOORS & DRAWERS	4' - 0"	2' - 10"	2' - 0"	
B14-30	STORAGE W/ SINGLE DRAWER	2' - 6"	2' - 8"	2' - 6"	
B22-12	STORAGE W/ SINGLE DOOR & DRAWER	1' - 0"	2' - 10"	2' - 6"	
B22-14	STORAGE W/ SINGLE DOOR & DRAWER	1' - 2"	2' - 8"	2' - 0"	
B22-15	STORAGE W/ SINGLE DOOR & DRAWER	1' - 3"	2' - 8"	2' - 0"	
B22-18	STORAGE W/ SINGLE DOOR & DRAWER	1' - 6"	2' - 10"	2' - 6"	
B22-20	STORAGE W/ SINGLE DOOR & DRAWER	1' - 8"	2' - 10"	2' - 6"	
B22-24	STORAGE W/ SINGLE DOOR & DRAWER	2' - 0"	2' - 8"	2' - 0"	
B22S-12	STORAGE W/ SINGLE DOOR & DRAWER	1' - 0"	2' - 8"	2' - 0"	
B22S-18	STORAGE W/ SINGLE DOOR & DRAWER	1' - 6"	2' - 8"	2' - 0"	
B42-12	STORAGE w/ 3 DRAWERS	1' - 0"	2' - 8"	2' - 0"	
B42-18	STORAGE w/ 3 DRAWERS	1' - 6"	2' - 8"	2' - 0"	
B42-21	STORAGE w/ 3 DRAWERS	1' - 9"	2' - 8"	2' - 0"	
B42S-12	STORAGE w/ 3 DRAWERS	1' - 0"	2' - 10"	2' - 6"	
B62-36	STORAGE W/ 10 DRAWERS	3' - 0"	2' - 8"	2' - 6"	
BADA1-36	ACCESSIBLE SINK BASE CABINET	3' - 0"	2' - 8"	2' - 0"	
TALL CABINETS					
MS1-36	INSTURMENT STORAGE	3' - 0"	7' - 6"	3' - 0"	WENGER OR EQUAL
MS1-48	INSTURMENT STORAGE	4' - 0"	7' - 6"	3' - 0"	WENGER OR EQUAL
T3-30	TALL STORAGE w/ SINGLE DOOR & ADJUSTABLE SHELVING	2' - 6"	7' - 0"	2' - 0"	DOOR WITH TACKBOARD
T4-36	TALL STORAGE w/ SINGLE DOOR & ADJUSTABLE SHELVING	3' - 0"	7' - 0"	2' - 0"	DOOR WITH TACKBOARD
WALL CABINETS					
W1-36	OPEN STORAGE	3' - 0"	2' - 6"	1' - 2"	
W1-48	OPEN STORAGE	4' - 0"	2' - 6"	1' - 2"	
W15a-30	STORAGE w/ DOUBLE DOORS	2' - 6"	2' - 6"	1' - 2"	
W15a-36	STORAGE w/ DOUBLE DOORS	3' - 0"	2' - 6"	1' - 2"	
W15a-42	STORAGE w/ DOUBLE DOORS	3' - 6"	2' - 6"	1' - 2"	
W15c-12	STORAGE w/ SINGLE DOOR	1' - 0"	2' - 6"	1' - 2"	
W15c-18	STORAGE W/ SINGLE DOOR	1' - 6"	2' - 6"	1' - 2"	
W15c-20	STORAGE W/ SINGLE DOOR	1' - 8"	2' - 6"	1' - 2"	
W15c-24	STORAGE W/ SINGLE DOOR	2' - 0"	2' - 6"	1' - 2"	



C:\Users\jw\Documents\Concord-Carlisle HS_CENTRAL.dwg, Printed: 8/10/2012 4:45:23 PM

Architect: **omr architects inc**
 543 Massachusetts Ave, West Acton, MA 01720
 www.omr-architects.com t: 978.264.0160

Consulting Engineer:

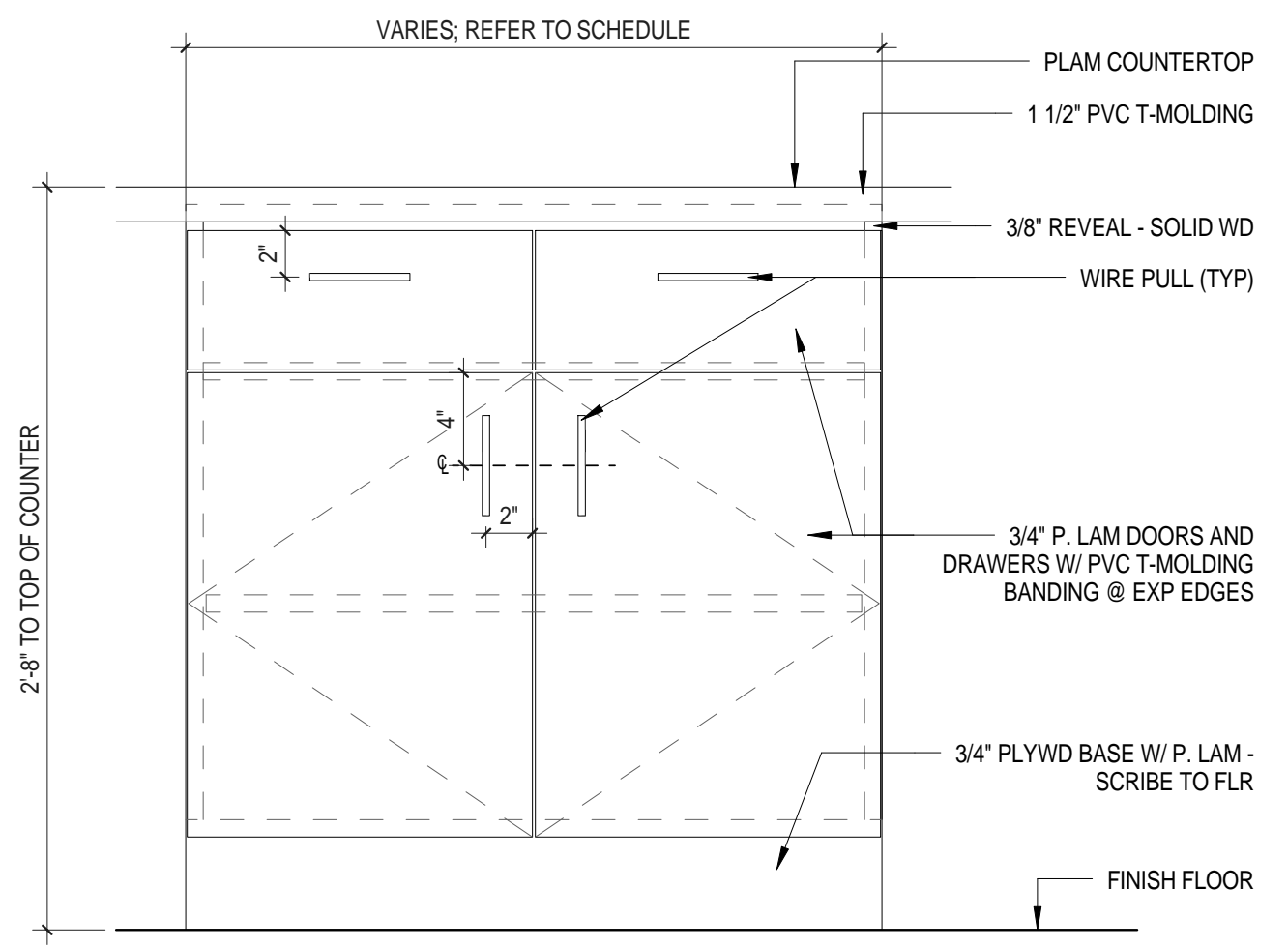
Registration: **Design Development Submission**

Project Name and Address: **Concord-Carlisle Regional High School**
 500 Walden Street
 Concord, MA 01742

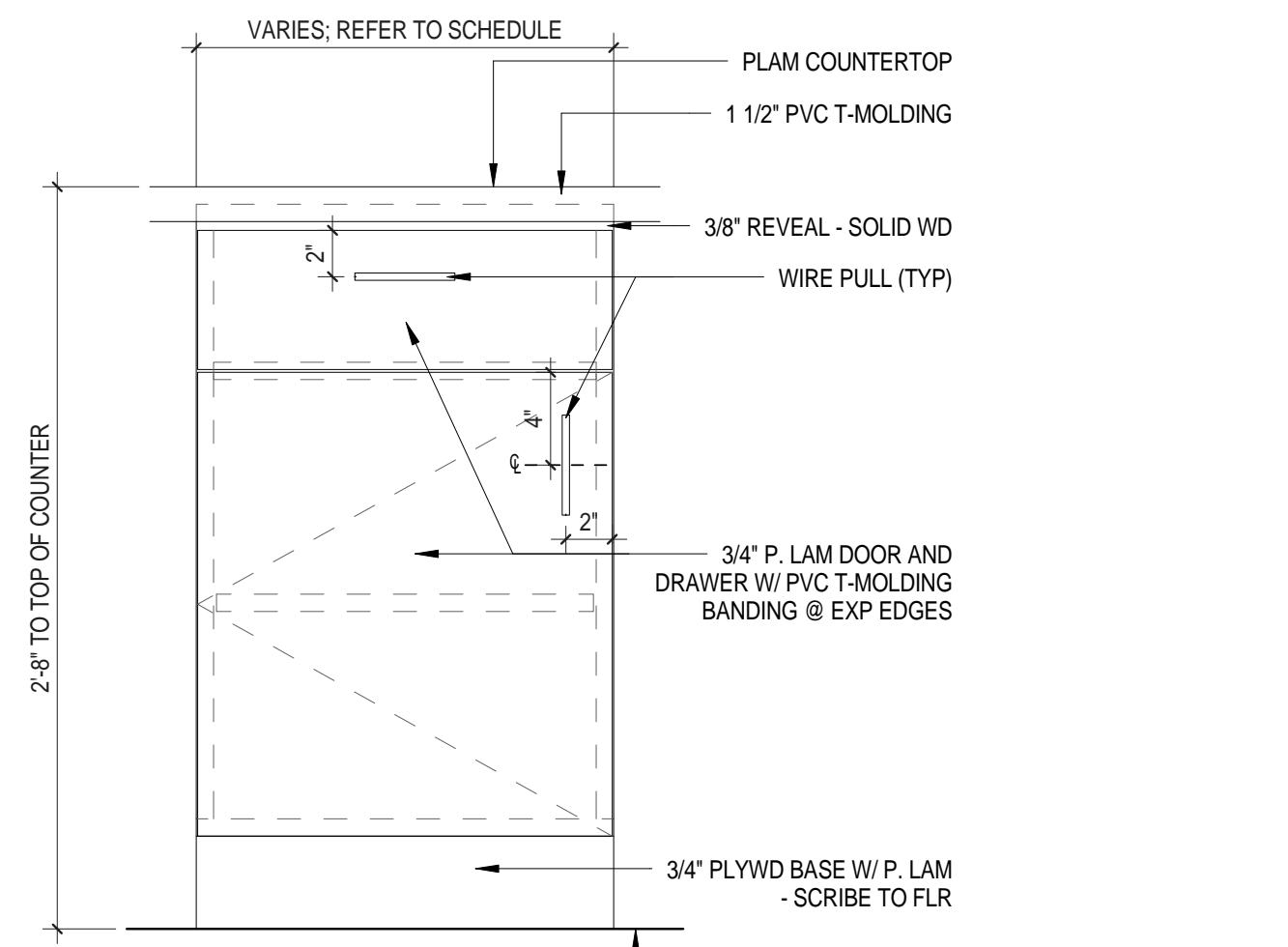
Issue Submissions:		
No.:	Date:	Description:

Title: **Casework Schedule & Details**
 Date: August 15, 2012 Scale: 1/4" = 1'-0"
 Drawn: MB/MD Checked: bc/lkr

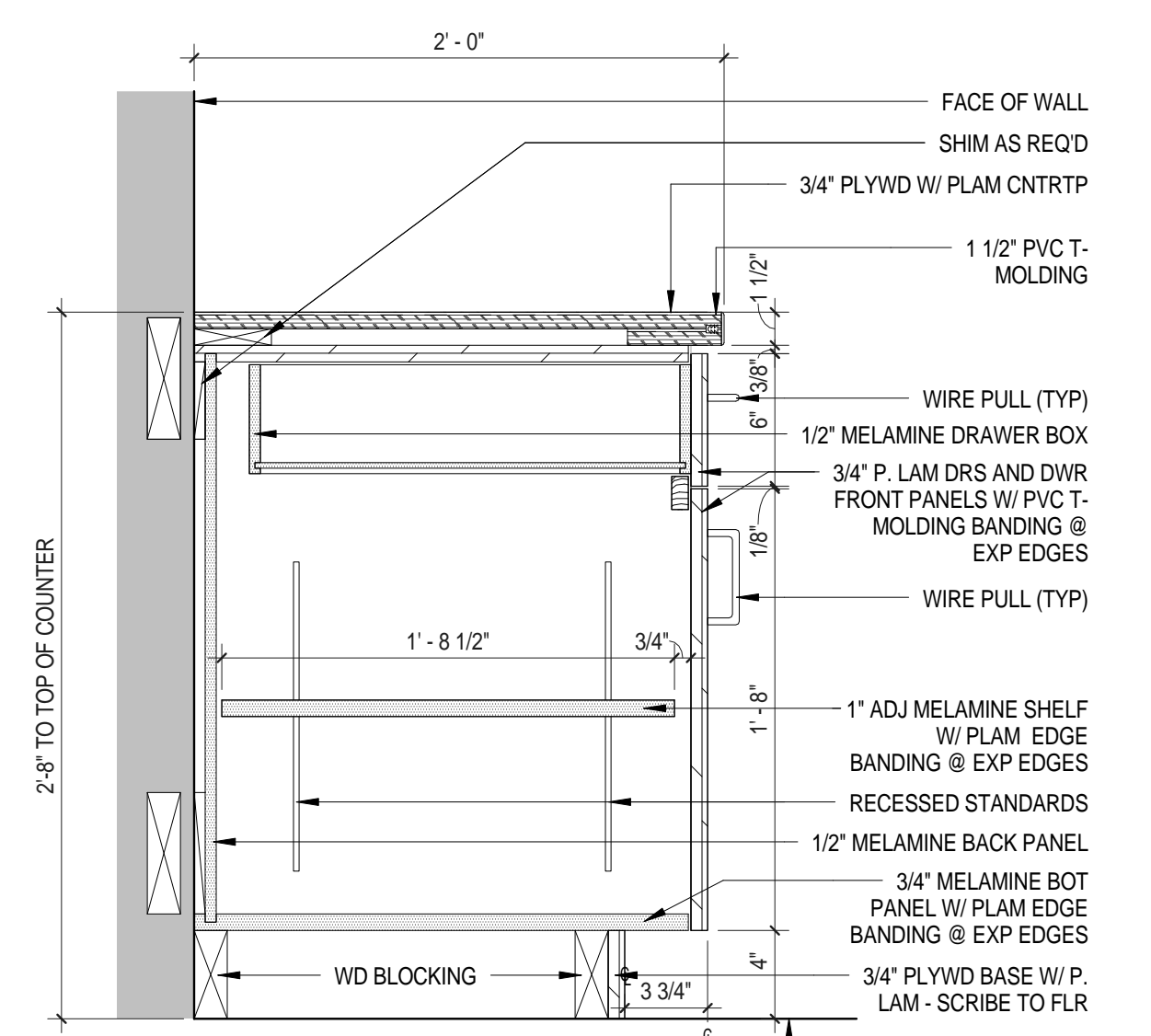
Project No.: **1102.00**
 Drawing No.: **A12.1**
 © omr architects inc



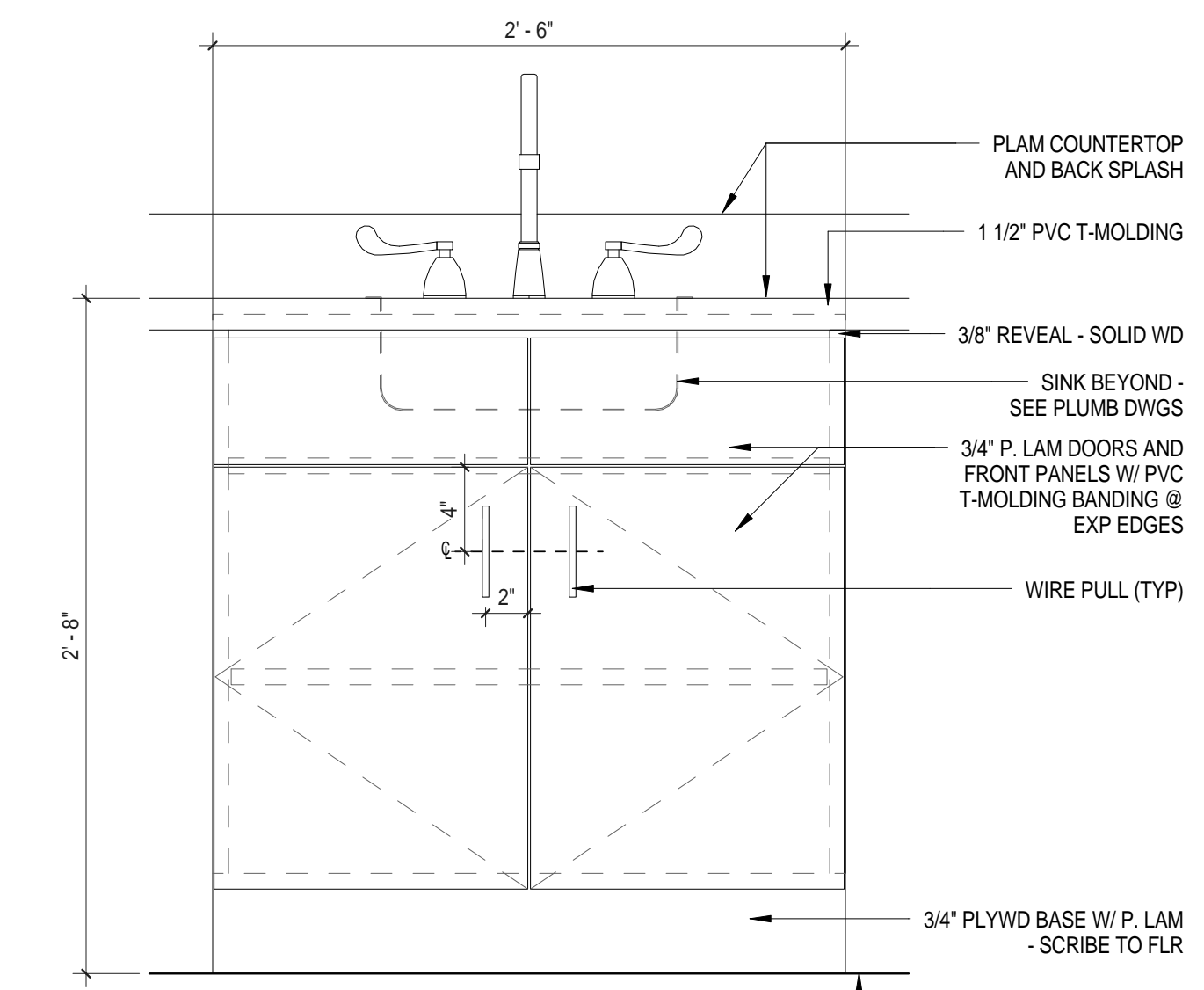
B12 STORAGE W/ DBL DRS & DWRS ELEVATION
1 1/2" = 1'-0"



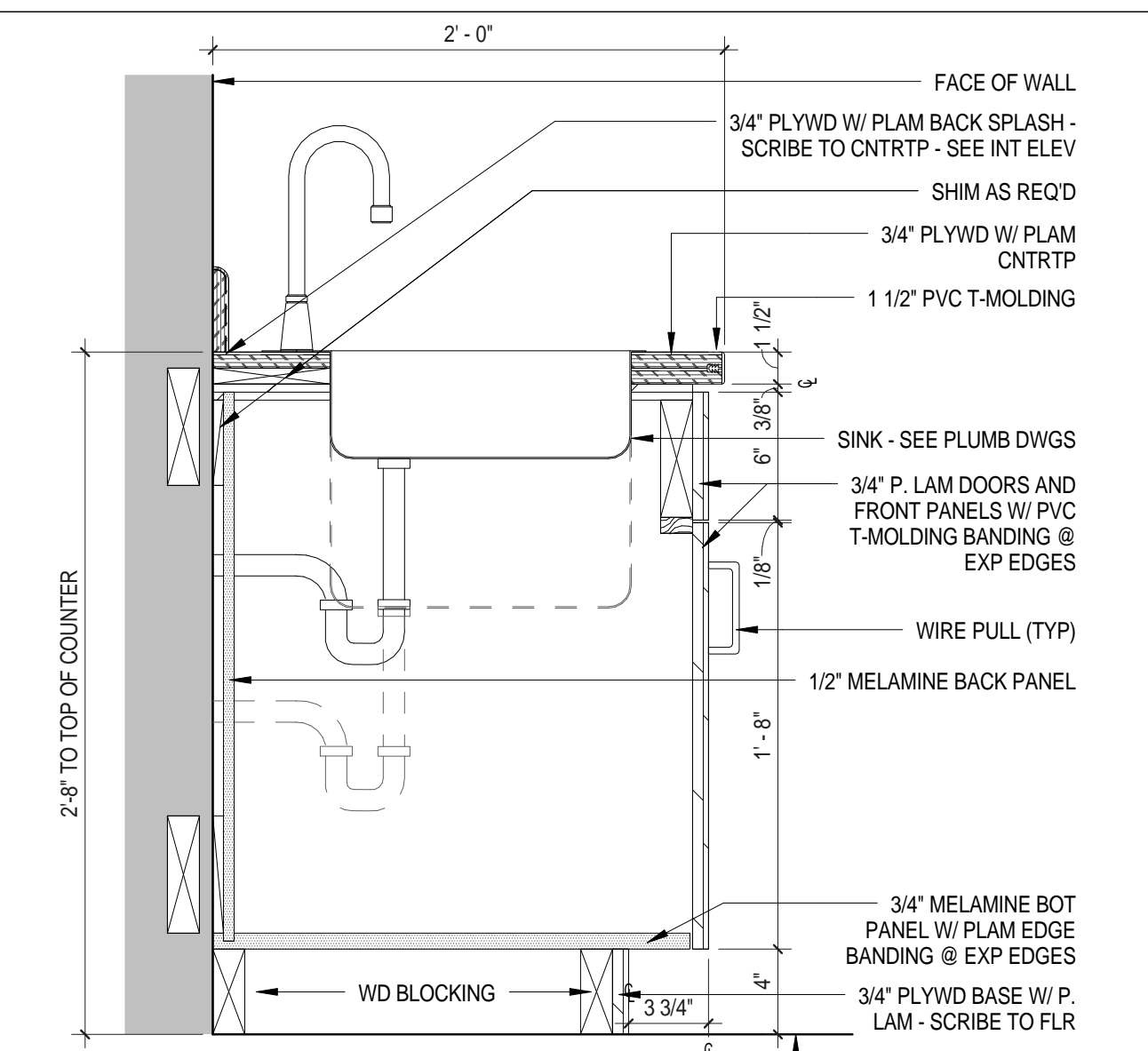
B22 STOR W/ SNGL DR & DWR ELEV
1 1/2" = 1'-0"



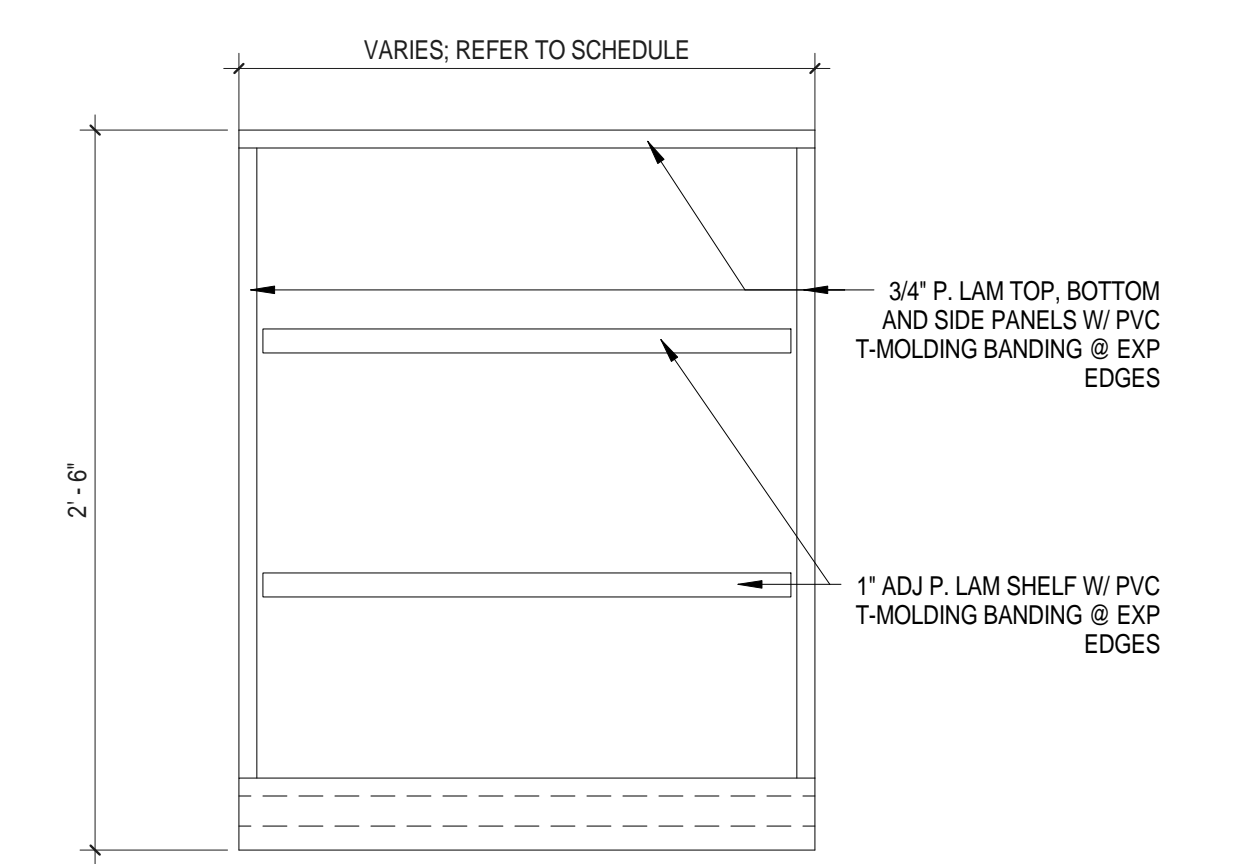
B12B22 STORAGE W/ DRS & DWRS SECTION
1 1/2" = 1'-0"



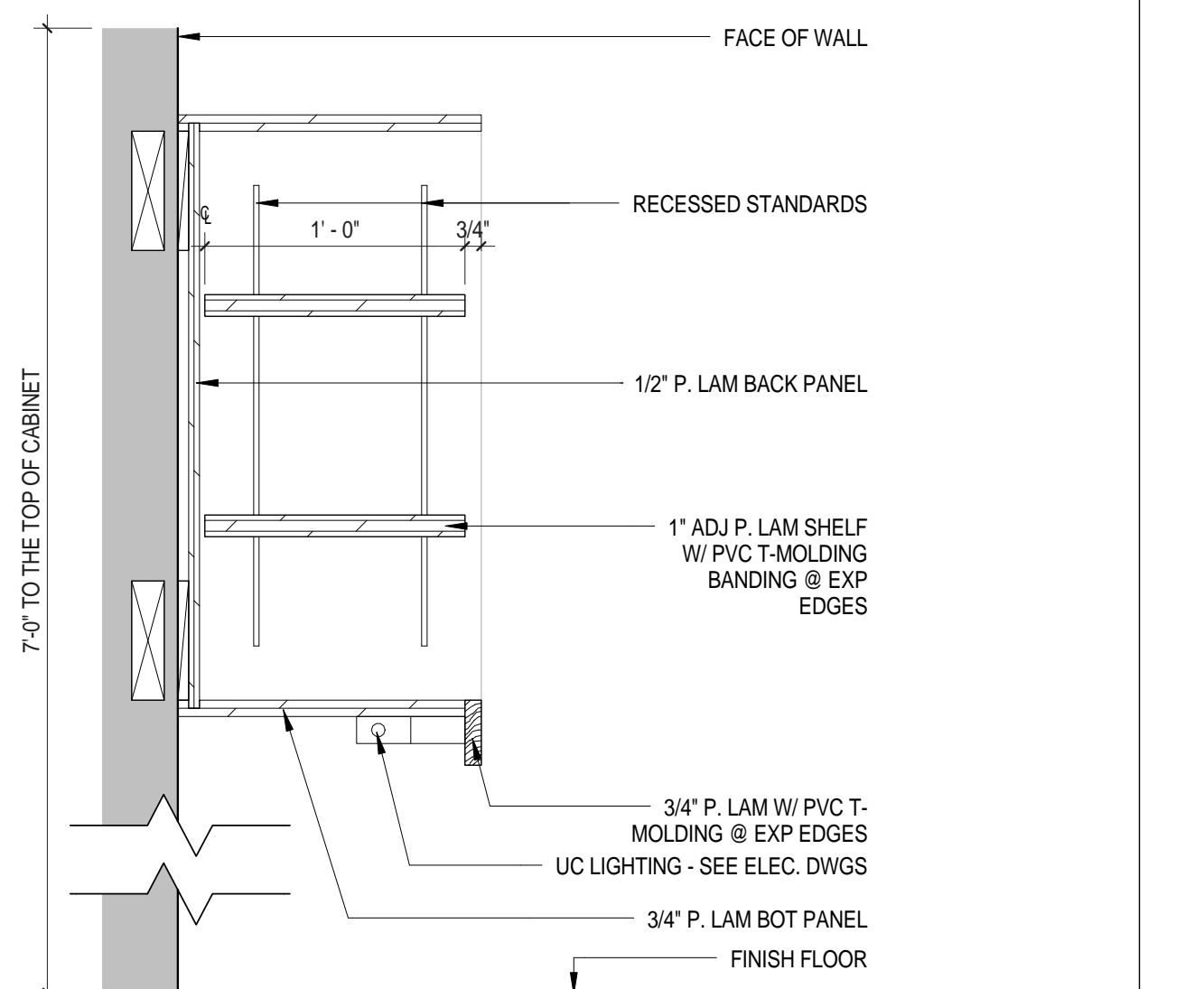
B12s SINK CABINET W/ DBL DRS & FRONT PANELS ELEV
1 1/2" = 1'-0"



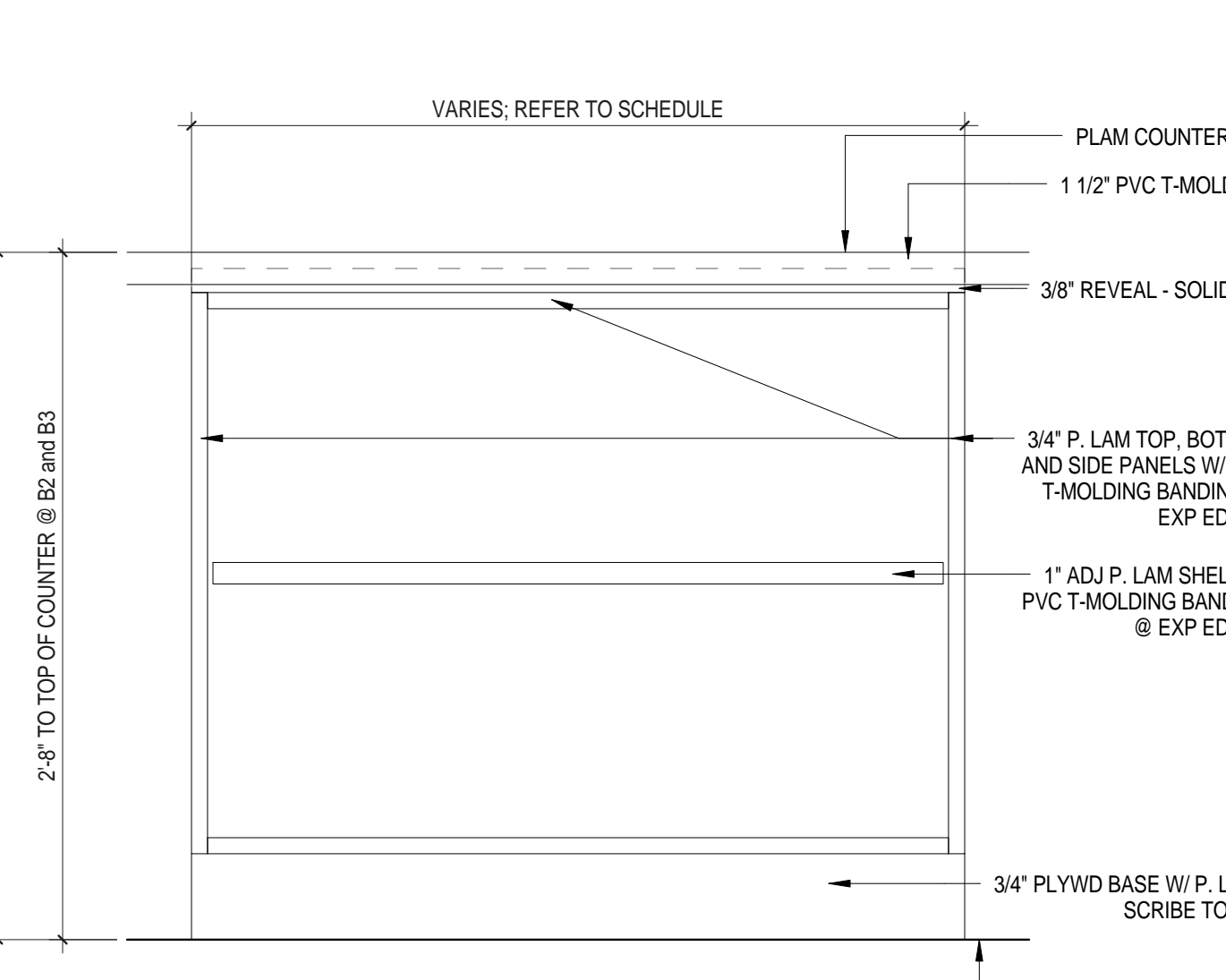
B12s SINK CAB W/ DBL DRS & FRONT PANELS SECT
1 1/2" = 1'-0"



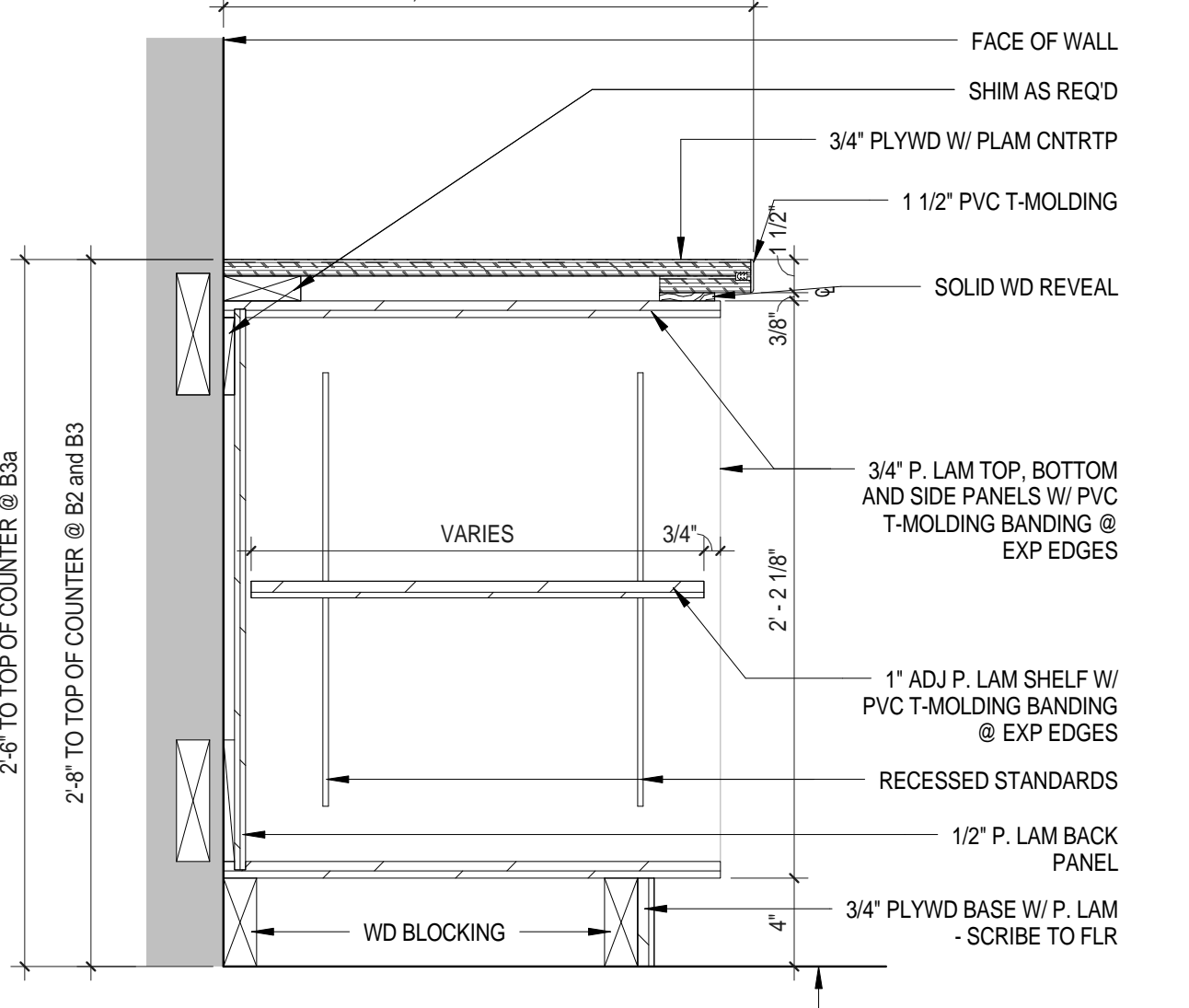
W1 OPEN STORAGE W/ UC LIGHTING ELEV
1 1/2" = 1'-0"



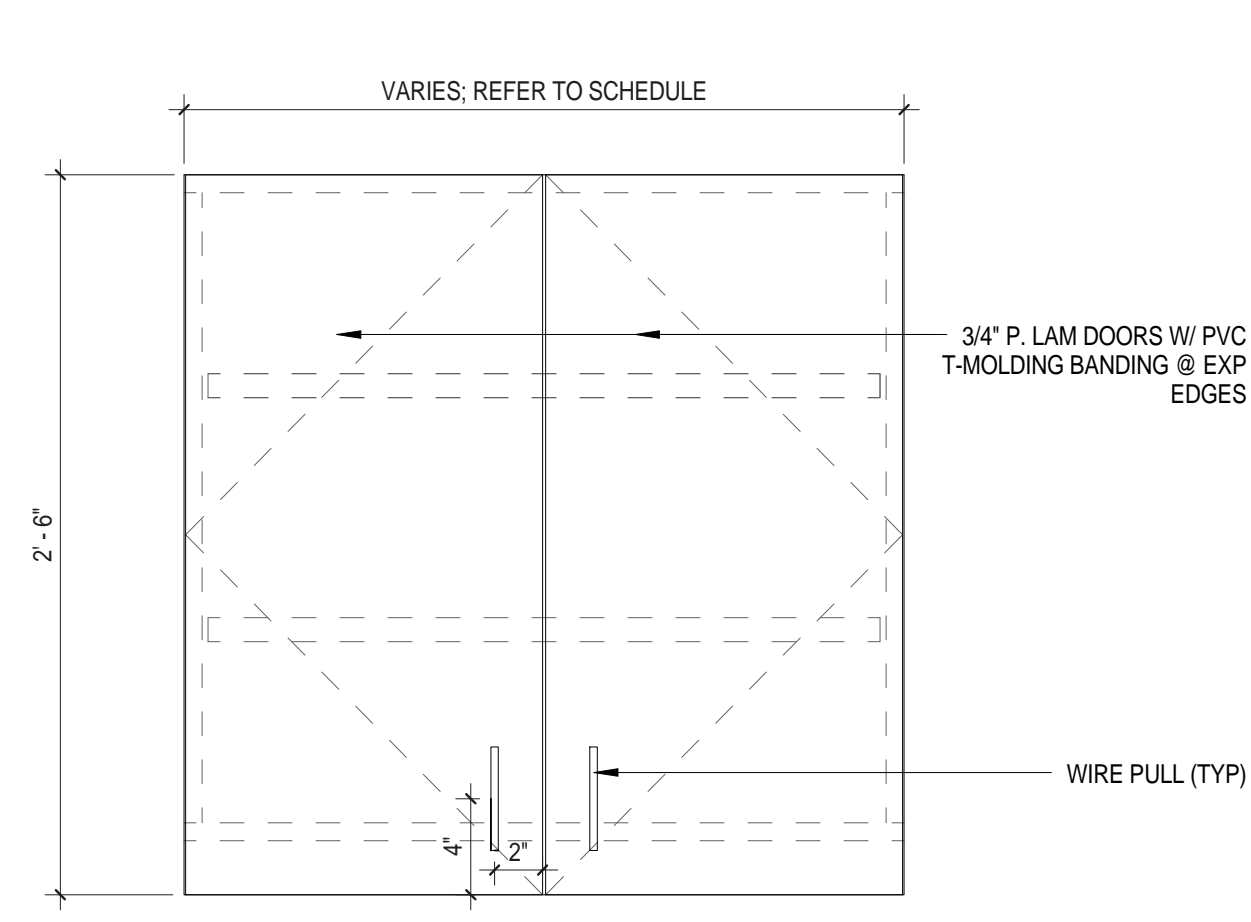
W1 OPEN STORAGE W/ UC LIGHTING SECT
1 1/2" = 1'-0"



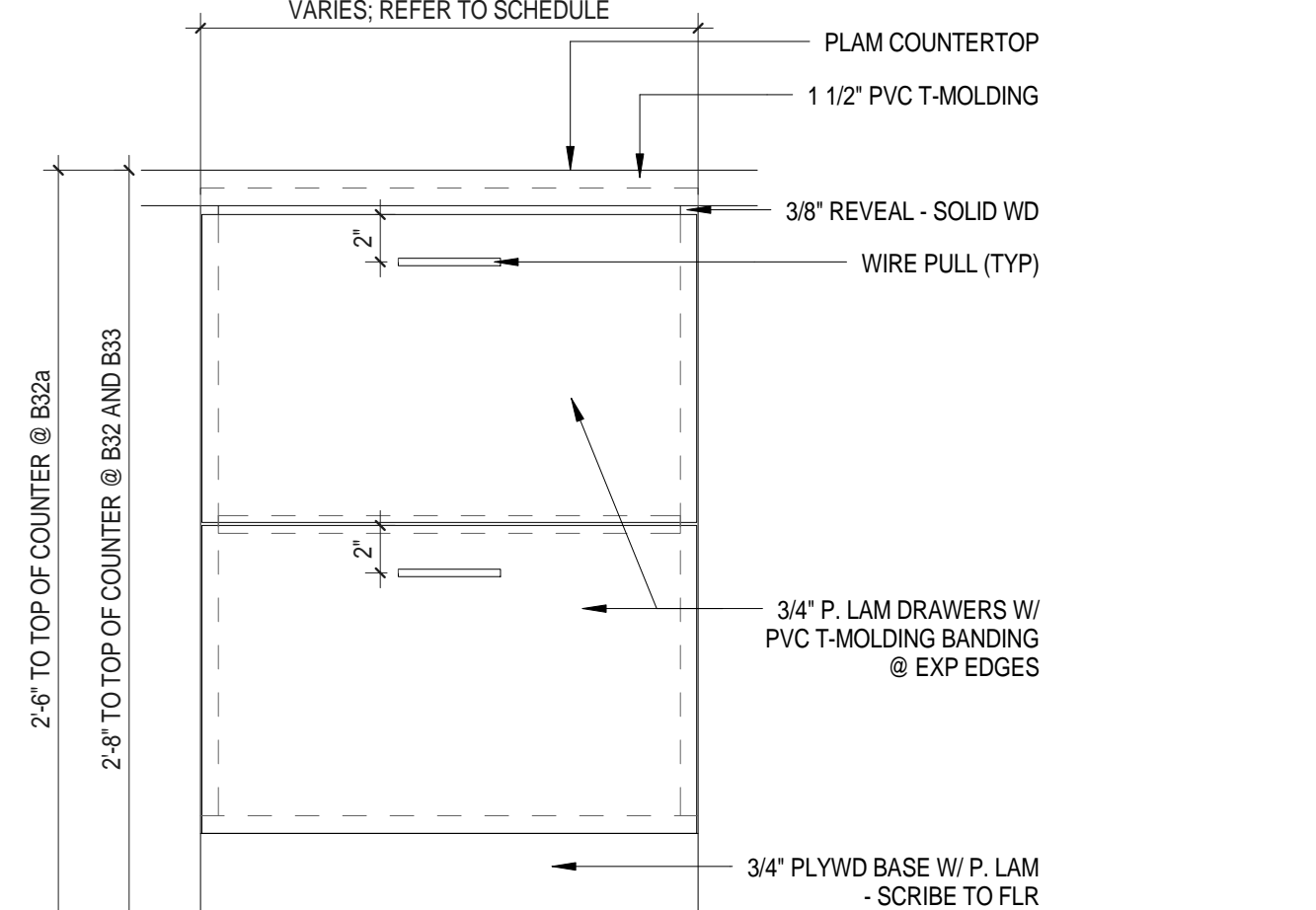
B2 B3a B3 OPEN STORAGE ELEVATION
1 1/2" = 1'-0"



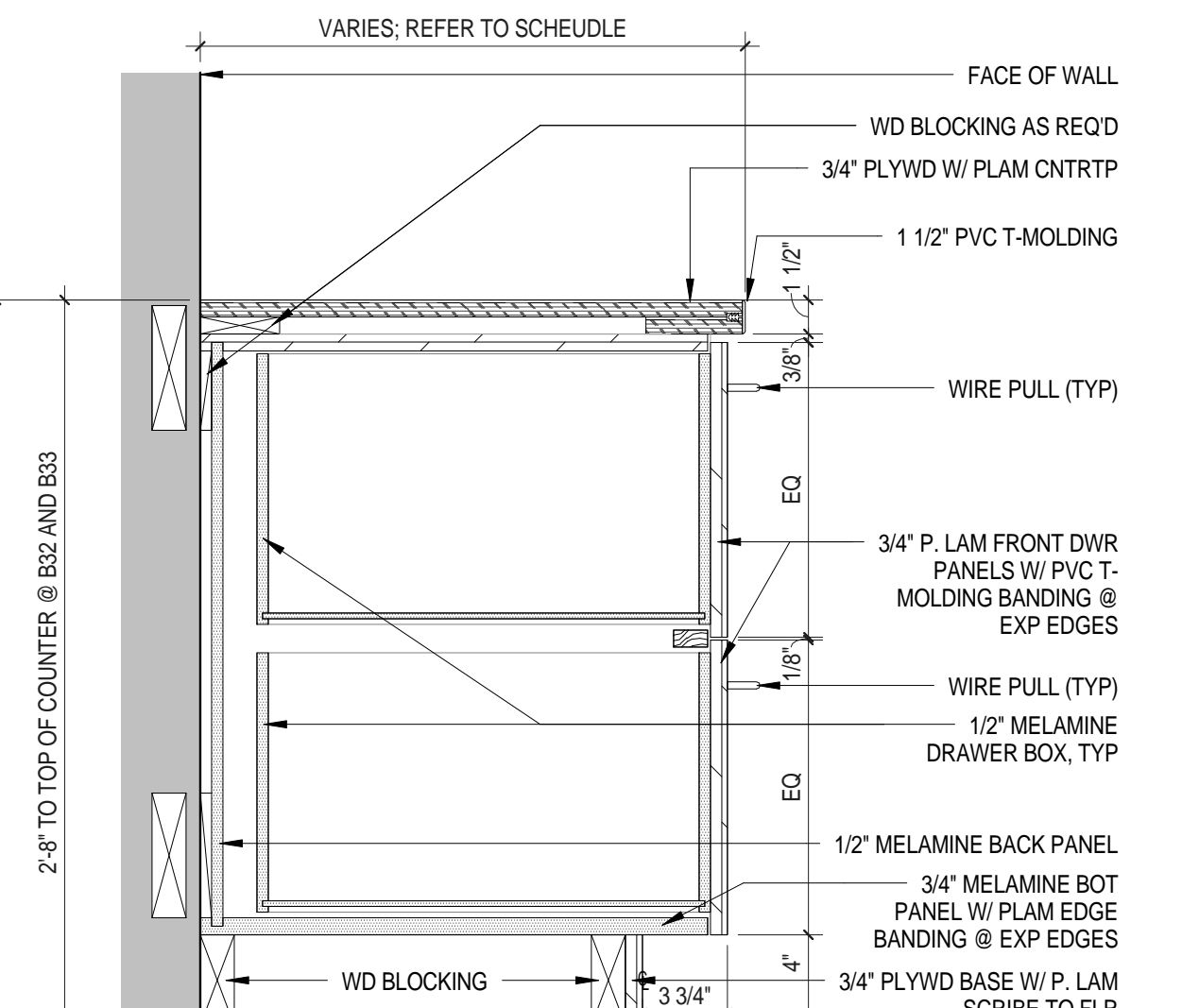
B2 B3a B3 OPEN STORAGE SECTION
1 1/2" = 1'-0"



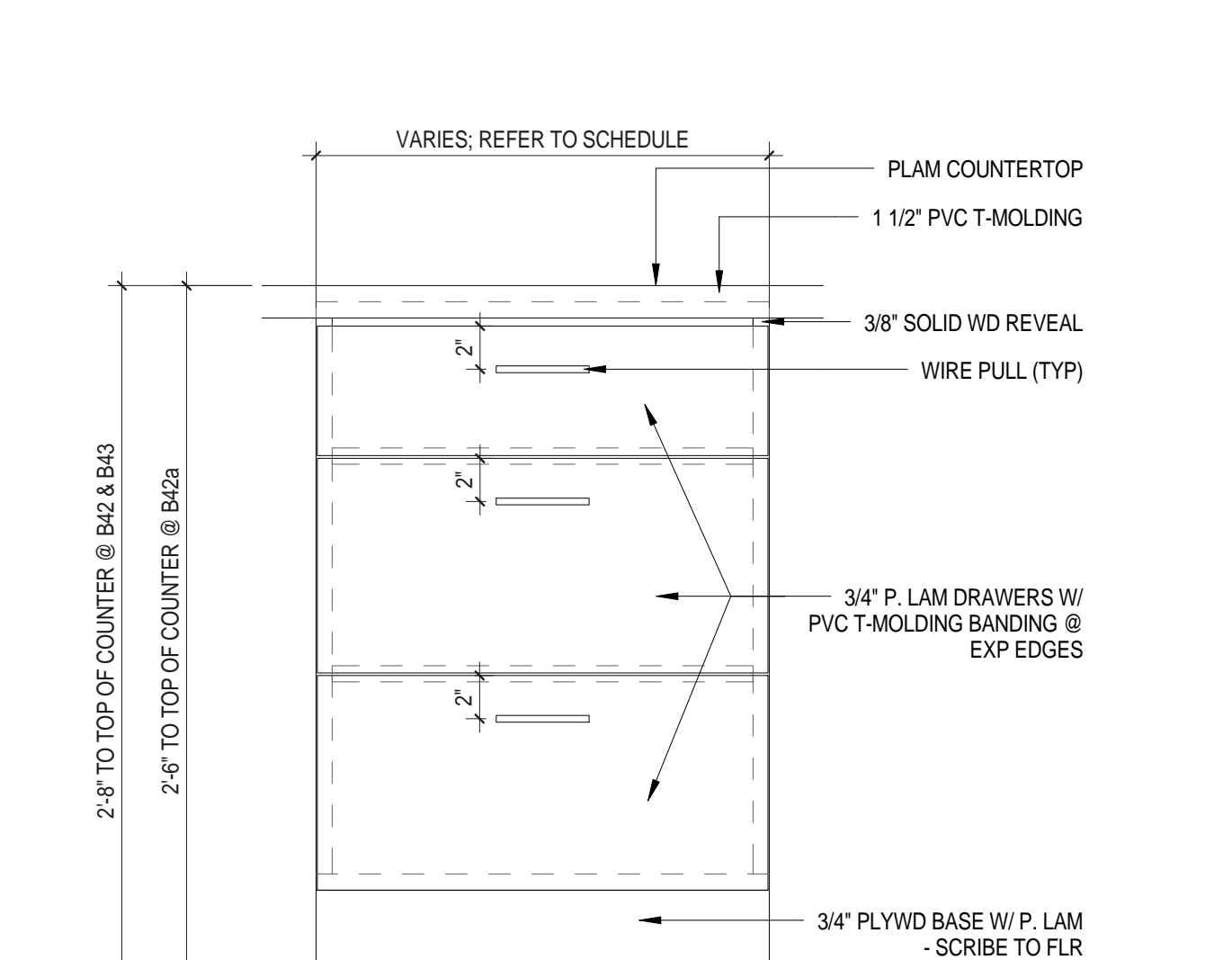
W4 STORAGE W/ DBL DRS & UC LIGHTING ELEV
1 1/2" = 1'-0"



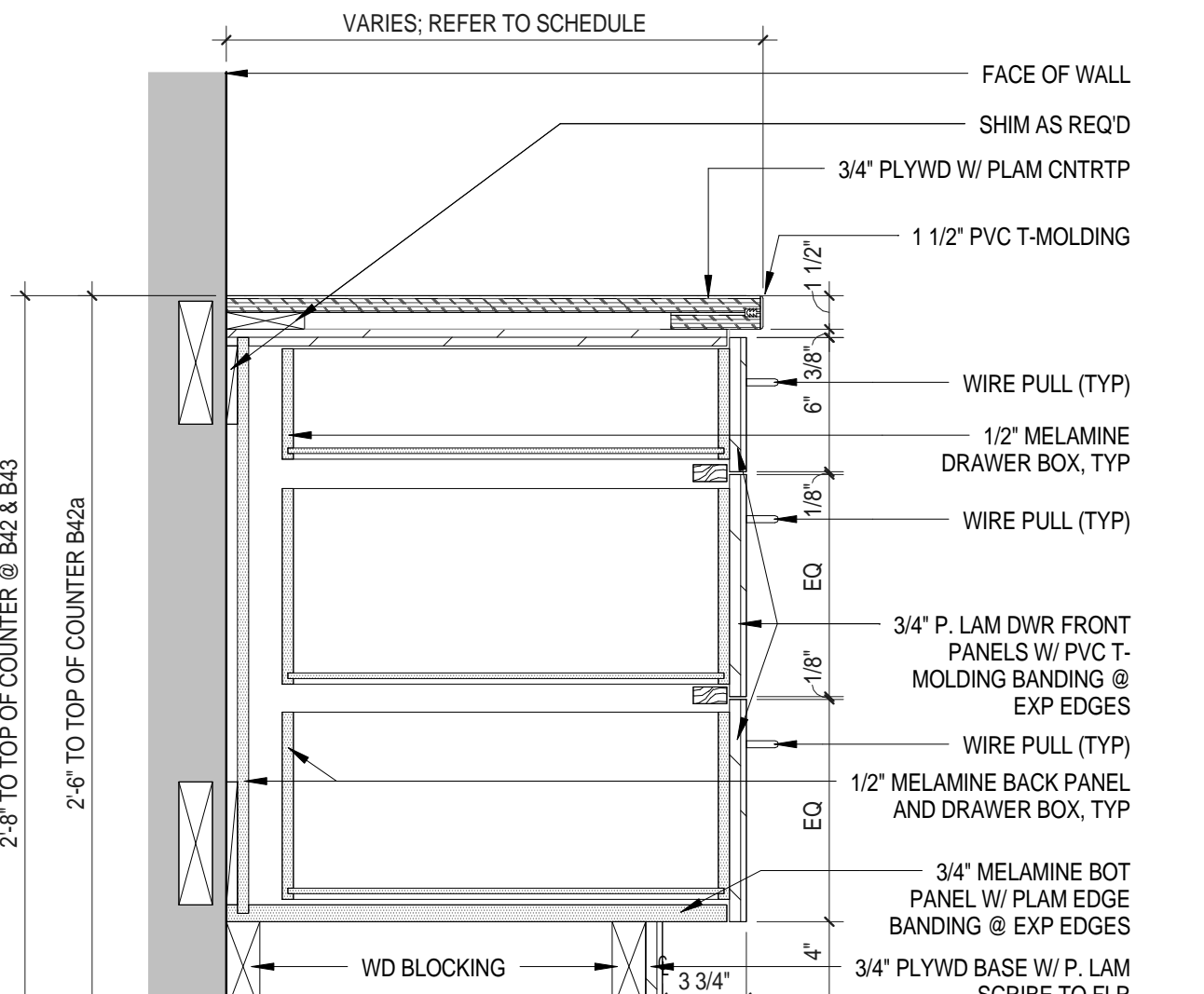
B32B32aB33 STORAGE W/ 2 DWRS ELEVATION
1 1/2" = 1'-0"



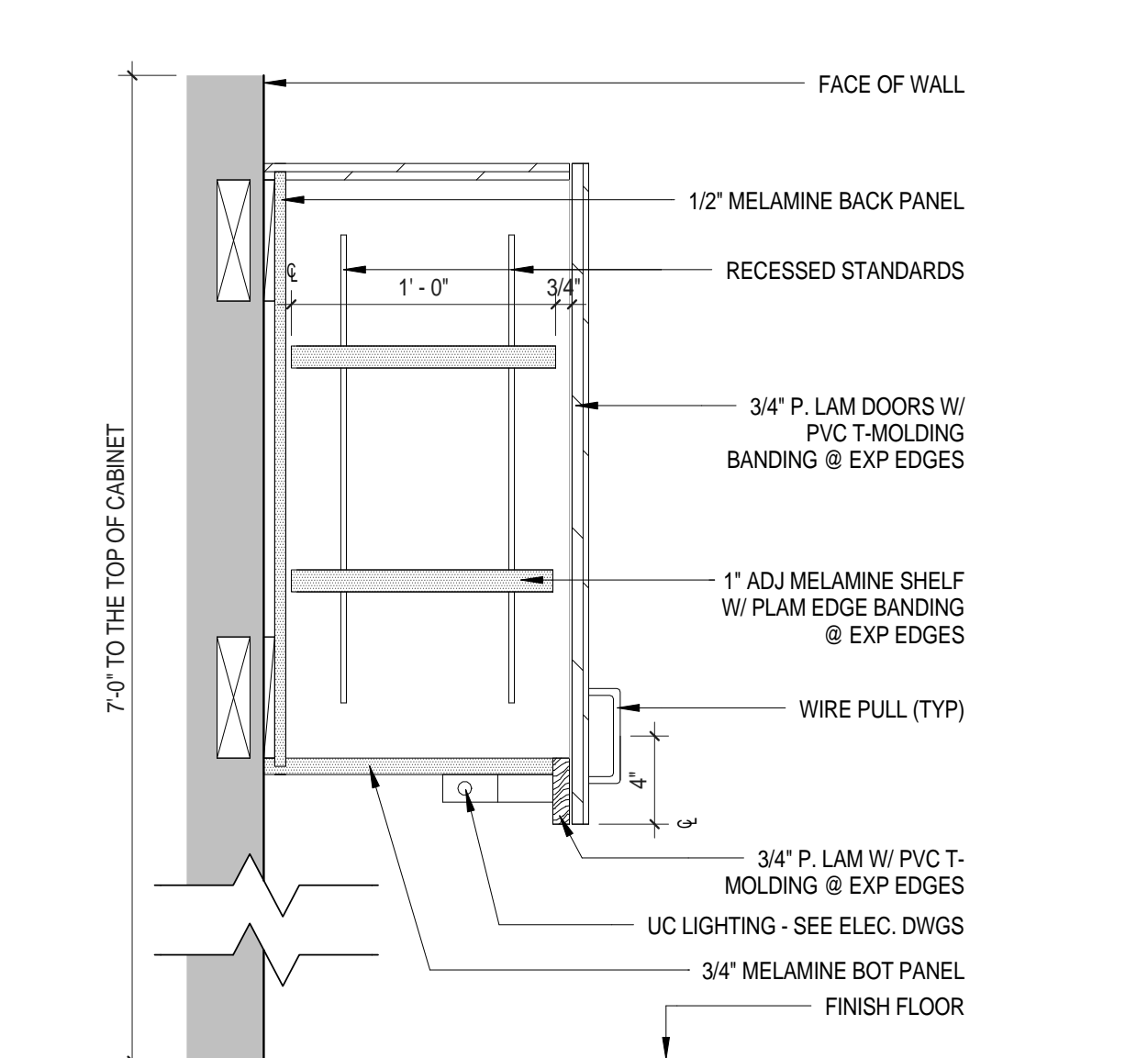
B32B32aB33 STORAGE W/ 2 DWRS SECT
1 1/2" = 1'-0"



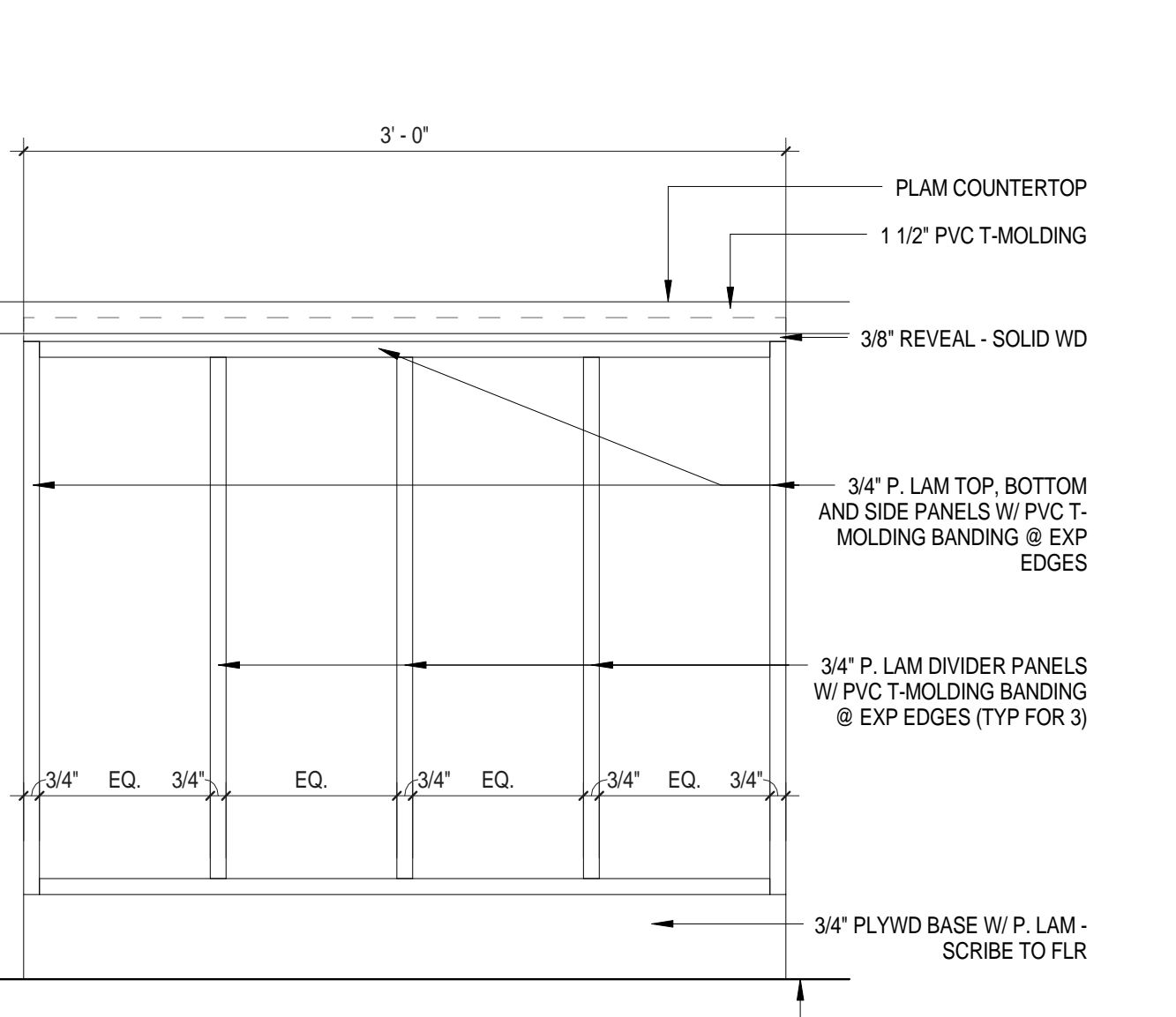
B42aB42B43 STORAGE W/ 3 DRAWERS ELEVATION
1 1/2" = 1'-0"



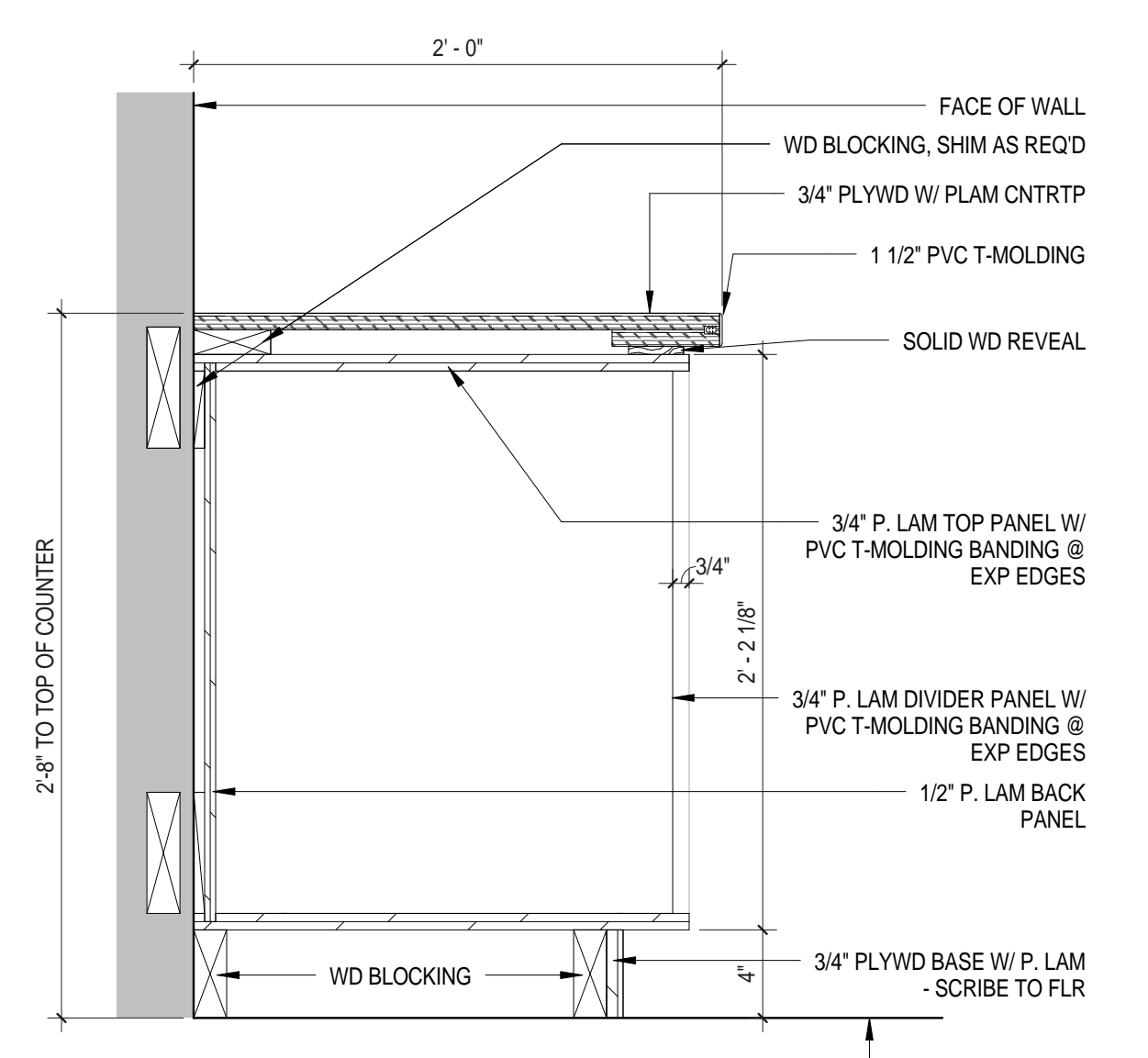
B42aB42B43 STORAGE W/ 3 DWRS SECT
1 1/2" = 1'-0"



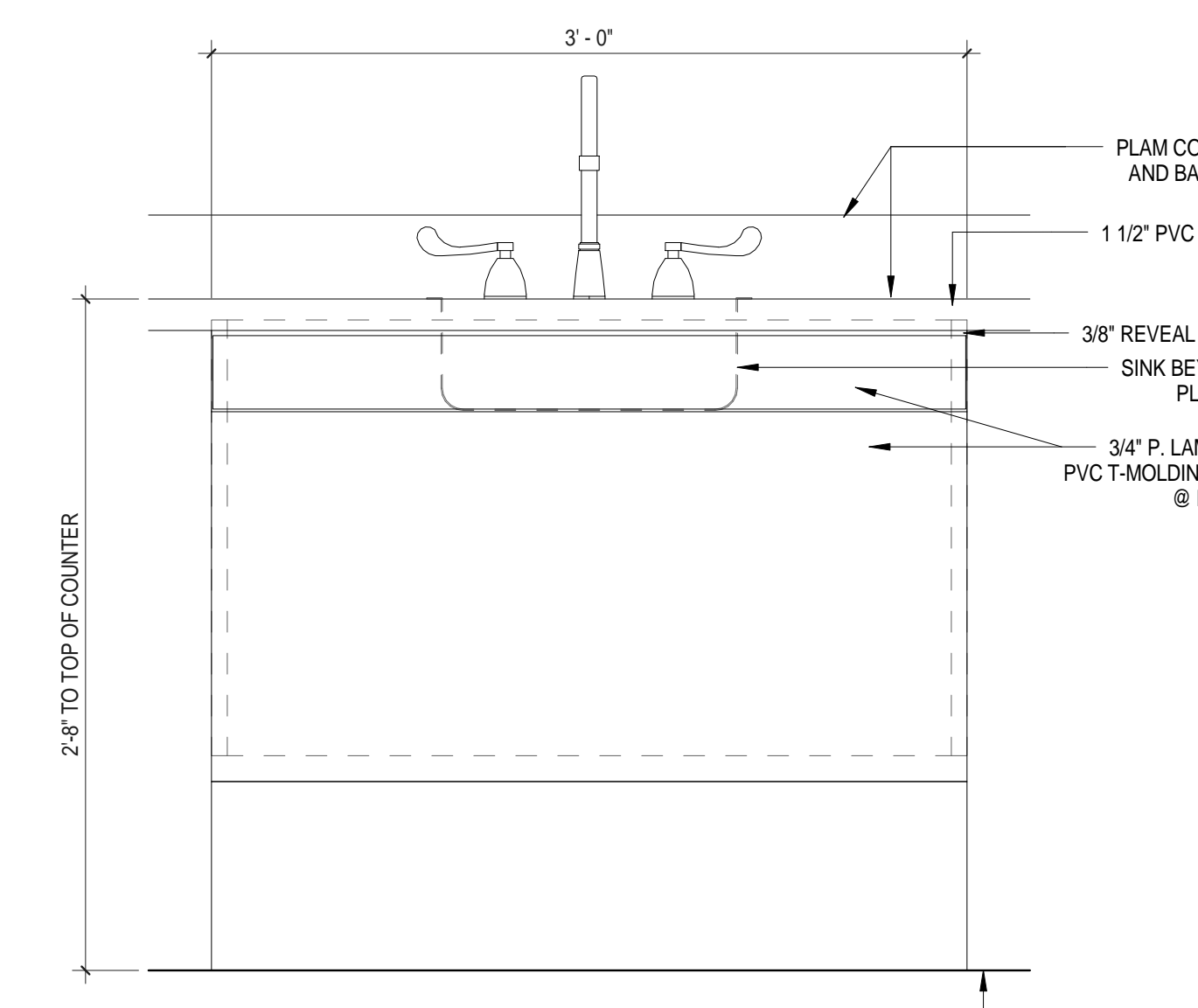
W4 STOR W/ DBL DRS & UC LIGHTING SECT
1 1/2" = 1'-0"



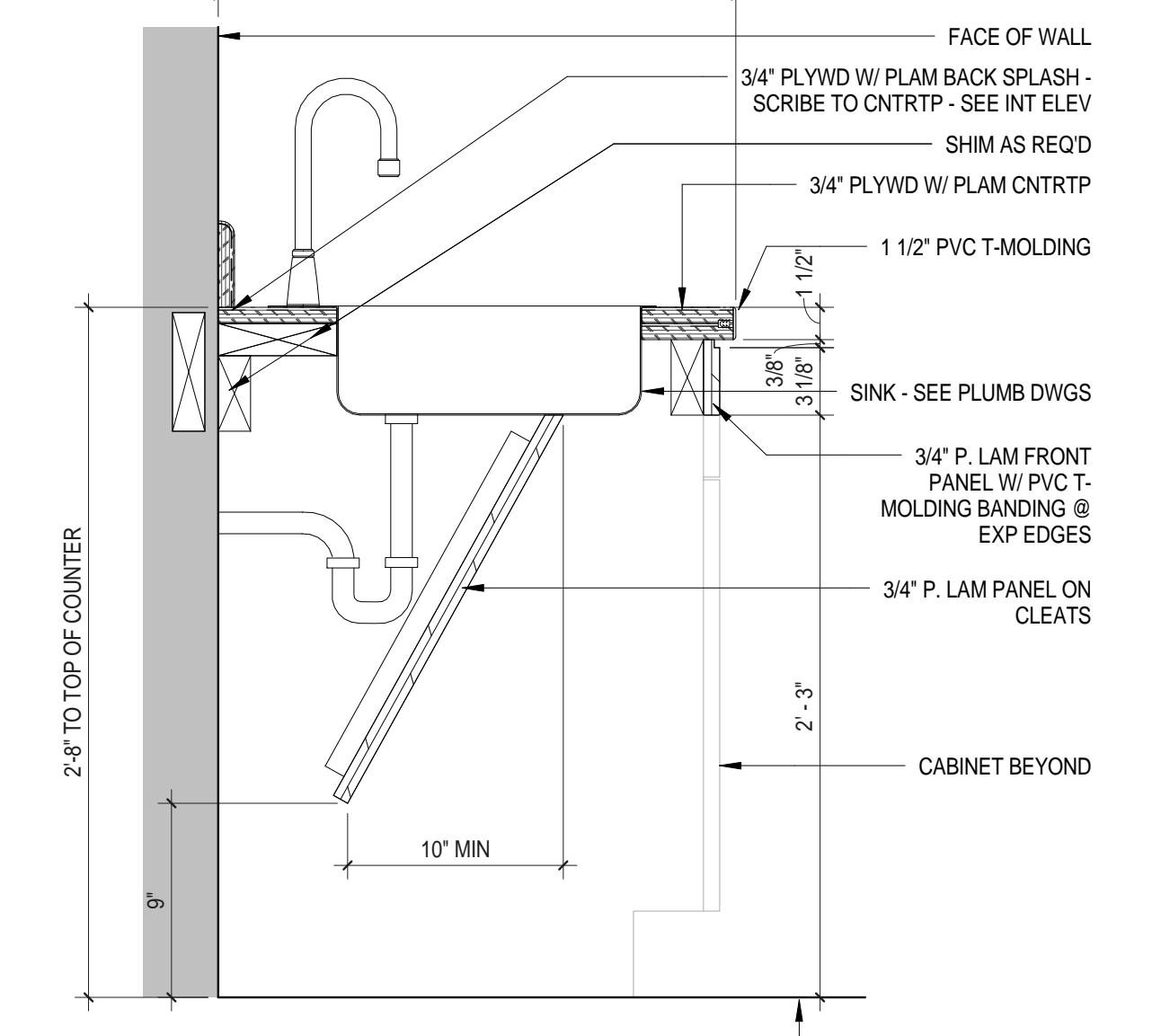
B4 OPEN STORAGE W/ DIVIDERS ELEVATION
1 1/2" = 1'-0"



B4 OPEN STORAGE W/ DIVIDERS SECTION
1 1/2" = 1'-0"



BADA1BADA2 BASE CAB W/ SINK / ADA KNEE SPACE ELEV
1 1/2" = 1'-0"



BADA1BADA2 BASE CAB W/ SINK / ADA KNEE SPACE SECT
1 1/2" = 1'-0"

C:\Users\jveel\Documents\Concord-Carlisle HS_CENTRAL.dwg (Printed: 8/10/2012 4:46:16 PM)

<p>Architect:</p> <p>omrarchitects inc</p> <p>543 Massachusetts Ave, West Acton, MA 01720 www.omr-architects.com t: 978.264.0160</p>	<p>Consulting Engineer:</p>	<p>Registration:</p> <p>Design Development Submission</p>	<p>Project Name and Address:</p> <p>Concord-Carlisle Regional High School</p> <p>500 Walden Street Concord, MA 01742</p>	<p>Issue Submissions:</p> <table border="1"> <thead> <tr> <th>No.</th> <th>Date</th> <th>Description</th> </tr> </thead> <tbody> <tr><td> </td><td> </td><td> </td></tr> <tr><td> </td><td> </td><td> </td></tr> <tr><td> </td><td> </td><td> </td></tr> <tr><td> </td><td> </td><td> </td></tr> <tr><td> </td><td> </td><td> </td></tr> </tbody> </table>	No.	Date	Description																<p>Title:</p> <p>Casework Elevations & Sections</p>	<p>Project No.:</p> <p>1102.00</p>
No.	Date	Description																						
<p>Date: August 15, 2012</p>			<p>Scale: 1 1/2" = 1'-0"</p>	<p>Drawn: CL</p>	<p>Checked: bc</p>	<p>Drawing No.:</p> <p>A12.2</p> <p>© omr architects inc</p>																		